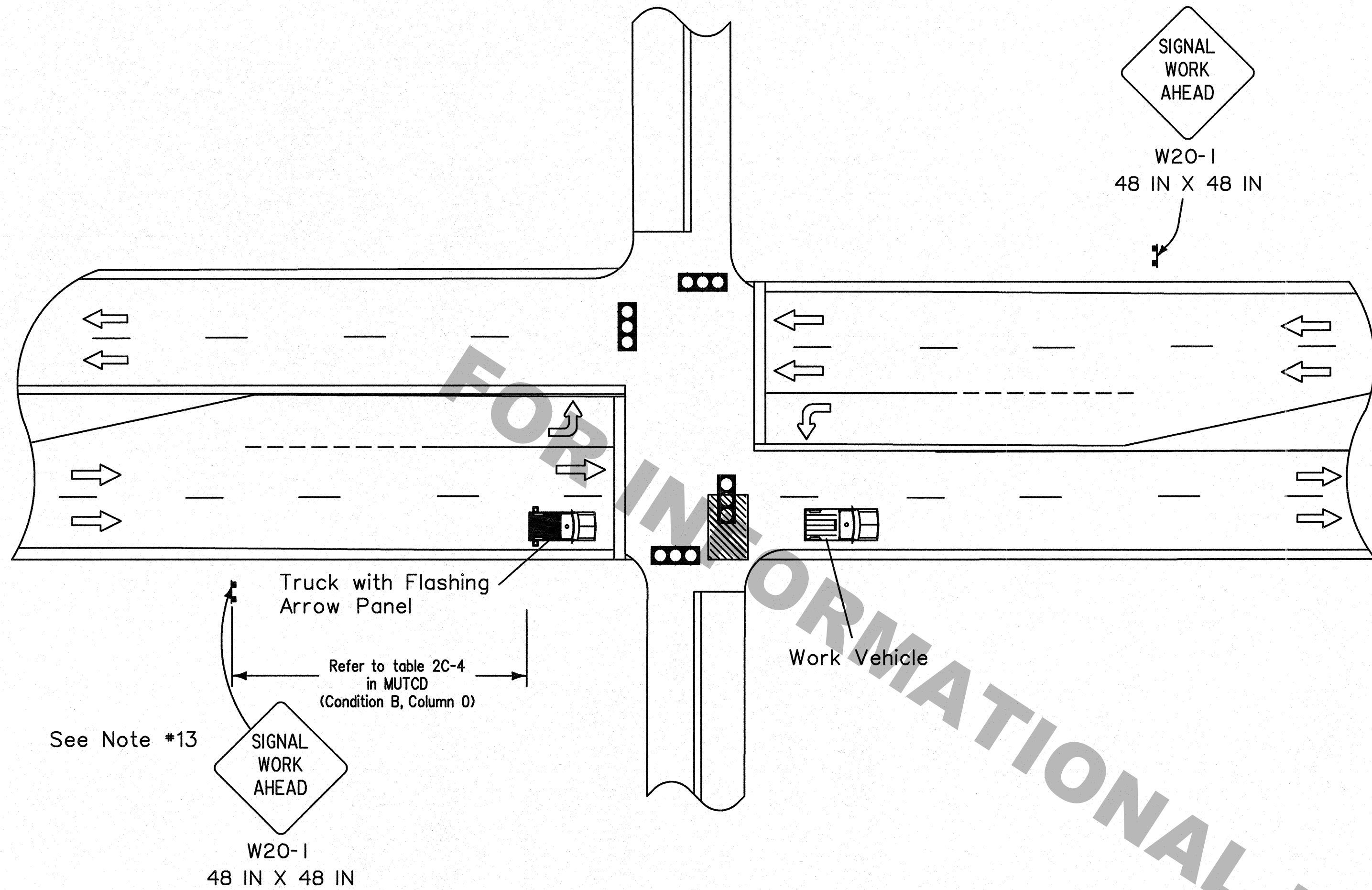
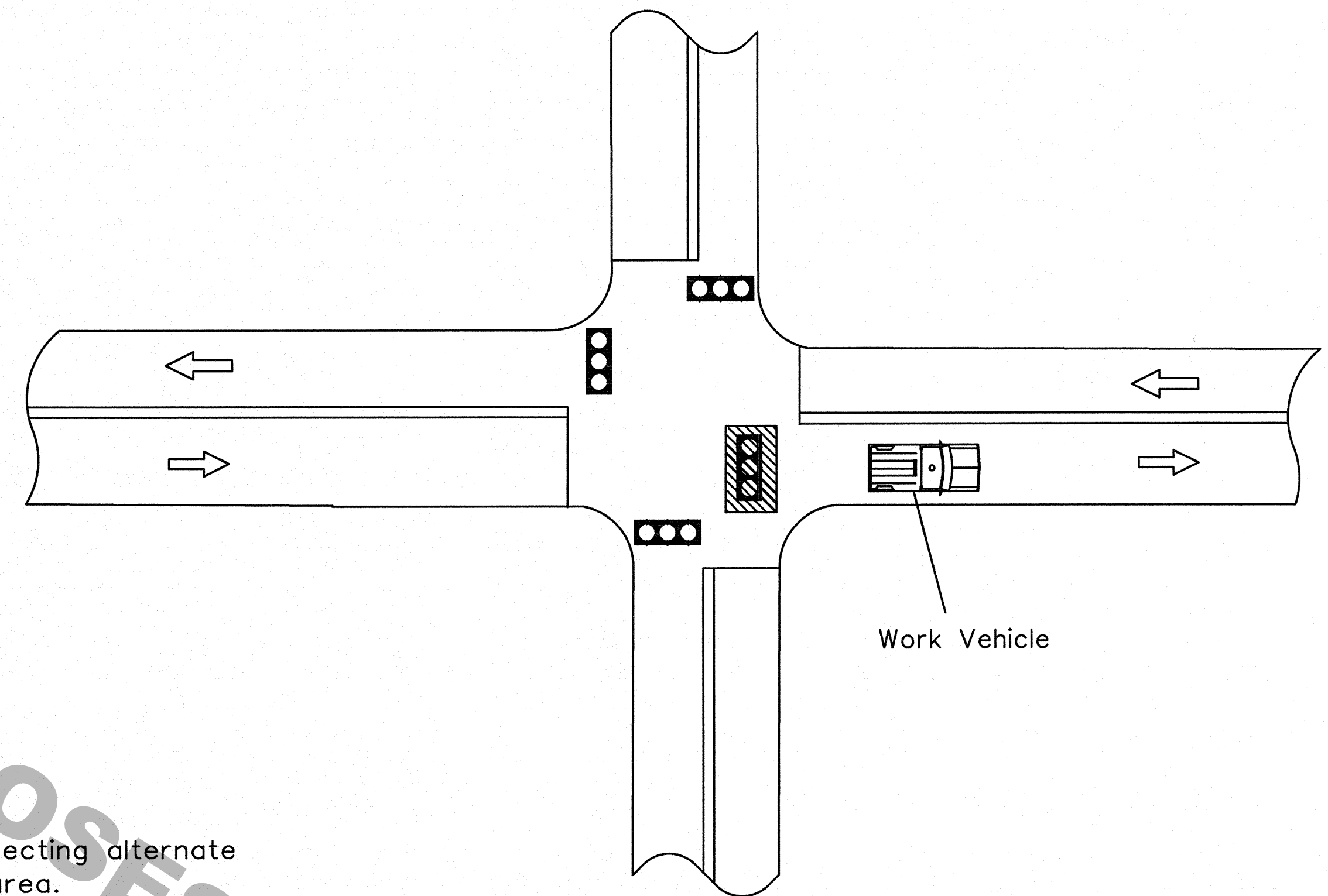


SIGNAL WORK ON A MULTI-LANE ROADWAY FOR UP TO ONE HOUR



SIGNAL WORK ON A TWO-LANE TWO-WAY ROADWAY



NOTES

This sheet shall be used with the Temporary Traffic Control General Notes Sheets TTC-00(A), TTC-00(B), and TTC-00(C).

- This layout represents the minimum traffic controls required during signal construction and maintenance.
- For projects with multiple signals, the contractor shall construct only one signal at a time.
- If the signal at an intersection is turned off, the intersection may operate as a 4-way stop with approval by the Engineer and the DTOE. The contractor shall be responsible for installing and removing all stop signs at the intersection.
- A detour plan is required if the road will be closed to through traffic at all approaches.
- A uniformed police officer shall direct traffic for short duration lane closures.
- The turn lane may be used as a through lane if a minimum 10-foot lateral clearance can be maintained and opposing traffic is not impeded.
- A signal timing and phasing plan shall be developed for each phase of construction.
- Place "Road Work Ahead" sign prior to an intersecting alternate route, no more than 1500 feet from the work area.
- The sign height shall be at least 7 feet in business, commercial, and residential areas and also near parking, pedestrians, bicyclists, or other obstructions.
- All work must be done during off-peak hours.
- The contractor shall not work on both through lanes at the same time.
- For signal work on a multi-lane roadway greater than 1 hour, see TTC-09 or TTC-10.
- If the expected or actual queue length exceeds the distance in Table 2C-4 in the MUTCD, place an additional "Signal Work Ahead" sign (W20-1) at the end of the queue.
- For two-lane two-way roadways, a police car with flashing lights and 2 police officers will be required for intersection traffic control.

LEGEND

- Traffic Sign
- Work Vehicle
- Truck with Flashing Arrow Panel
- Work Area
- Direction of Travel
- Traffic Signal

ALL TTC STANDARDS SHOW MINIMUM CONSTRUCTION SIGNING.
ALL SITUATIONS SHALL BE REVIEWED AND/OR DESIGNED BY THE ENGINEER.
CONTRACTORS ARE RESPONSIBLE FOR COMPLYING WITH ALL TTC STANDARDS.

SHEET NUMBER		PARISH	
DESIGNED BY	COL VIN	FEDERAL PROJECT	STATE PROJECT
CHECKED BY	P. ALLAIN	02/13/2013	
DATE			
APPROVED BY	REVISION DESCRIPTION	DATE	BY
CHIEF ENGINEER		3/12/13	
TEMPORARY TRAFFIC CONTROL FOR TRAFFIC SIGNAL INSTALLATION AND MAINTENANCE AT AN INTERSECTION			
TTC-19			
TRAFFIC ENGINEERING			